



SYN.0232

## SYNTECH HAG INIETTORE 170

"Flat head" injector in steel and rubber for masonry injections

### Customs Code

8424 9080

### Packaging

- Bulk material 1 unit

### Application

- Apply by hand  
- Drill

Family  
Syntech

Product Lines

- Aqua
- Infratech

Type

**Polyurethane hydro expansive resins and related accessories**

Functional Categories

- **Structural strengthening of masonry in historic buildings**
- **Instantaneous stoppage of water infiltrations in buildings**
- **Waterproofing underground structures with hydro-expansive products**
- **Waterproofing control joints or construction joints**
- **Structural maintenance of dams, reservoirs, ducts and water ducts**
- **Structural maintenance of bridges and viaducts**
- **Structural maintenance of tunnels**

Components  
Single-component

Appearance  
Mechanical device

## General description

Rubber and steel injector, to be inserted at the cracks, fissures, loose stone foundations, joints, cavities, etc. to be waterproofed, using hydro-expansive polyurethane resins SYNTECH H.A.G. ECO and SYNTECH H.A.G. FLEX, specific for immediately stopping the infiltration of water. Equipped with " flat head " with non-return valve, it is for use in combination with SYNTECH H.A.G. CONNETTORE.

## Dosage

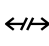
Product to buy as needed (about 4 pieces per metre on regular cracks).

## Fields of application

Stop the infiltration of pressurised water in buildings by targeted injection of hydro-expansive polyurethane resins SYNTECH H.A.G. or fluid epoxy resins (SYNTECH IC 55).


## Basic features

 Diameter:  
16 mm

 Length:  
170 mm

 Nonflammable

 Unlimited shelf-life

 Available colours  
Steel

## Tools cleansing

- Nitro thinner

## Applicable on

- Concrete
- Prefabricated concrete
- Bricks
- Tuff
- Mixed walls (bricks and stones)
- Stone walls
- Rock walls

## Substrate preparation

The surfaces of application should be clean and free of any soiling, crumbling and non-adhering parts, powder, mosses, moulds, etc...

Drill holes at the predetermined injection points. The injection holes will first be made with an 8-10 mm drill bit, which should reached the required and intended depth within the wall body. Subsequently, only for the last superficial 10 cm, a second drilling will be performed in the same hole, with a 18 mm drill bit to create the seat where the rubber tip of the injector will be inserted.

IF YOU WANT TO SOLVE IT  
 **azichem**

[www.azichem.com](http://www.azichem.com)

Updated: **24/08/2020**

General sales conditions and legal notices on

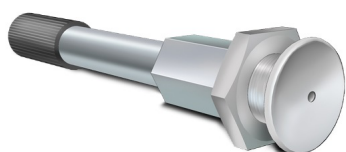
[www.azichem.com/disclaimer](http://www.azichem.com/disclaimer)

## Instructions for use

Insert SYNTECH H.A.G. INIETTORE 170 in the intended holes. Screw the end portion of the injector with a suitable key. Screwing the injector will compress the rubber located on its tip, making it swell and thus creating the required mechanical and hydraulic seal. At this point, the injector is ready to be used.

Ensure the seal of the injectors placed in the supports is secure. Given the high injection pressures reached by the pumps, in the case of injectors not positioned securely and correctly there is a real risk that they might come out at high speed from their seat (with the risk of injury to the operators!).

Carefully study the positioning of the injectors near the masonry discontinuities to be injected. Bad positioning, too close to the crack to be filled, can cause the breaking of the support itself under the pressure of the pump.



## Warnings, Precautions and Ecology

The general information, along with any instructions and recommendations for use of this product, including in this data sheet and eventually provided verbally or in writing, correspond to the present state of our scientific and practical knowledge.

Any technical and performance data reported is the result of laboratory tests conducted in a controlled environment and thus may be subject to modification in relation to the actual conditions of implementation.

Azichem Srl does not assume any liability arising from inadequate characteristics related to improper use of the product or connected to defects arising from factors or elements unrelated to the quality of the product, including improper storage.

Those wishing to utilise the product are required to determine prior to use whether or not the same is suitable for the intended use, assuming all consequent responsibility.

The technical and characteristic details contained in this data sheet shall be updated periodically. For consultation in real time, please visit the website: [www.azichem.com](http://www.azichem.com). The date of revision is indicated in the space to the side. The current edition cancels out and replaces any previous version.

Please note that the user is required to read the latest Safety Data Sheet for this product, containing chemical-physical and toxicological data, risk phrases and other information regarding the safe transport, use and disposal of the product and its packaging. For consultation, please visit: [www.azichem.com](http://www.azichem.com).

It is forbidden to dispose of the product and/or packaging in the environment.

*SYNTECH HAGINIETTORE 170 is produced/distributed by*



[www.azichem.com](http://www.azichem.com)

Updated: **24/08/2020**

General sales conditions and legal notices on

[www.azichem.com/disclaimer](http://www.azichem.com/disclaimer)



Via Giovanni Gentile, 16/A - 46044 Goito (MN), Italy  
info@azichem.com Tel. +39 0376.604185 /604365 Fax +39 0376 604398